

Canon

Color
imageRUNNER™
C2058



versatile

user-friendly



productive



reliable

fast

A Colorful New Era in Office Productivity

economical



From the company that
defined color imaging...

another defining
moment.



Solutions

Introducing the Revolutionary Color imageRUNNER C2058 Digital Copier/Printer from Canon.

The Canon Color imageRUNNER C2058 has arrived. And not a moment too soon. In a world filled with business documents competing for attention, color is no longer a luxury, but rather a mandate in more of today's work-place environments than ever before. And therein lies the inspiration behind Canon's high-performance, highly efficient Color imageRUNNER—one of the most innovative products ever to enter the office environment.

CANON BRINGS HIGH-SPEED, HIGH-PERFORMANCE COLOR PRINTING TO THE DESKTOP.

Now there's a high-speed, fully connected, print-on-demand Color Copier/Printer easily within reach of corporate offices and workgroups—the Canon Color imageRUNNER C2058. A powerhouse of productivity, it allows everyone on your team to produce professional-quality, full-color, finished documents quickly and easily, while delivering black-and-white print jobs more economically than other color copiers in this class. It's what makes the Color imageRUNNER truly unique. But not when you consider it's from Canon, the world leader in color copying for over 14 years.*

POWER TO CUT THROUGH THE CLUTTER.

Look closely, and the real impact of the Canon Color imageRUNNER C2058 emerges. For starters, this model is **FAST**, with 21-page-per-minute color printing and copying speeds and 28-page-per-minute black-and-white output. It is **PRODUCTIVE**, too, with easy-to-use color copying, network printing, finishing options, and high-performance features that are attuned to the user. Also available is a built-in connectivity option, giving everyone in your workgroup the ability to create spectacular color presentations, impressive sales literature, exciting newsletters, eye-catching booklets, and more. Better still, thanks to low printing costs, the Color imageRUNNER C2058 model is **EFFICIENT**, too. So if the work you do is important enough to demand color, it deserves to be done on the Canon Color imageRUNNER.

- Productive Speed of 21 ppm in Color/28 ppm in Black-and-white
- Powerful Color and Cost-efficient Black-and-white Copying and Printing
- State-of-the-art Finishing Capabilities
- 600-dpi Print Resolution and 256 Gradation Levels of High-quality, Accurate Color
- Standard Automatic Duplexing

NOT UPGRADING COULD COST YOU.

Compared to Canon's Color imageRUNNER C2058, even multiple desktop color printers combined can't deliver the same high level of performance, productivity, and cost-savings.

With the Color imageRUNNER C2058, documents you never before considered for color output now can become part of your marketing strategy. You can produce customer-critical documents, such as portfolios, prospectuses, and statements very economically—even for different clients and diverse markets. What's more, you can ensure that proprietary information doesn't slip into the wrong hands.

The cost of all this capability? Less than you think. And the benefits? More than you can imagine—especially in terms of time saved, workflow improved, and, best of all, business potential realized.

Frankly, in today's demanding business environment, not upgrading could mean losing your competitive edge.

Benefits

WORKS BEAUTIFULLY ON BUDGETS...

and spreadsheets, reports, manuals...anything a busy workgroup puts out. Say you have to scrap all your color flyers due to a price change. With the Color imageRUNNER C2058, you're able to print only as many as you need, only when you need them. And no matter how many last-minute revisions, client changes, custom covers, or eleventh-hour deadlines are required, Canon's Color imageRUNNER delivers the job—without the additional “rush” charges you'd incur elsewhere.

BRING OUT YOUR BEST IDEAS ON ONE OF OURS.

About the only thing the Canon Color imageRUNNER C2058 can't contain is your imagination. Everything else is designed to benefit your work in many ways:

- New concepts are easily understood;
- Ideas get communicated faster;
- Recommendations are more persuasive;
- The image you project is stronger;
- Client recall is longer;
- All those “gray” areas disappear; and
- Your bottom line looks better all the time.

THE SHORTEST DISTANCE FROM INSPIRATION TO IMPLEMENTATION.

Fast turnaround is the norm at 21 color/28 black-and-white pages per minute. Advanced digital technology provides crisp, clean, black-and-white text and color images at 600 x 1200 dpi for PostScript and 600 x 1200 equivalent for PCL and black and white, with 256 gradations for outstanding printing. Automatic Document Feeding through the optional 50-sheet DADF-G1 and trayless Automatic Duplexing mean uninterrupted production of long copy or print jobs.

Seamless network support for a variety of popular protocols makes document distribution fast and efficient, too. Sharing knowledge quickly and easily raises workgroup productivity significantly.

And with Canon's unique Spherical Toner System, the results are more natural-looking, matte-finished documents, which are easier to handle and well-suited for business applications. Color documents especially benefit from Canon's exclusive Automatic Image Refinement, which ensures crisp text and clear image resolution. Add to all that Canon's Advanced Finishing features, and you still don't have the complete picture. When you consider everything the Color imageRUNNER does, and how fast and cost-effectively it does it, it's clear why Canon's legacy of leadership offers distinct advantages for today's busiest office environments.

NOT FUSSY ABOUT WHAT YOU FEED IT.

Canon's Color imageRUNNER C2058 offers versatile media-handling and multiple paper-feeding options. You can print on a variety of papers, including cover stock up to 80 lb. and transparencies. You'll even be able to create reports with color covers on heavy stock, giving you black-and-white pages combined with text and graphics throughout. Auto-duplexing makes it easy to produce brochures and flyers. And with the optional two-drawer Cassette Feeding Unit and optional Paper Deck, you'll have a total paper capacity of up to 5,550 sheets, which means less-frequent reloading and longer production runs.

LESS WAITING, MORE CREATING.

No more standing in line to input the next job. Whether you use the Color imageRUNNER as a walk-up copier or networked printing device, you get true multifunction convenience. And by the time the first job is complete, the next in the queue is ready to print, resulting in optimum productivity and efficiency. So now, you can be working on one job while the Color imageRUNNER finishes another.



DADF-G1



Paper Drawers/Paper Deck



OFFICE COLOR APPLICATIONS

.1. NEWSLETTERS
Use color on both sides to highlight important events and features.



.2. FLYERS/ANNOUNCEMENTS
The “eye-appeal” of color graphics helps to get your message across.



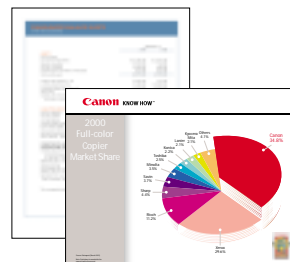
.3. PRESENTATIONS
Use color for the company logo. Make big ideas come alive. Color photos and graphics used as visual aids will help to keep audience attention where you want it—on your work.



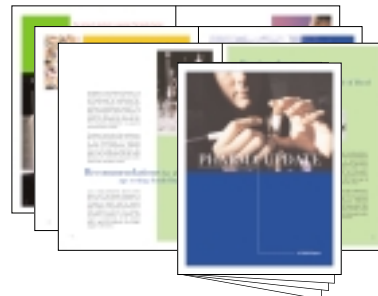
.4. PROPOSALS
Pull out all the stops and create a dynamic proposal that will set you apart from the competition.



**CHARTS/GRAPHS/
FINANCIAL REPORTS**
A color-enhanced chart or graph is much easier to read and understand.



SADDLE-STITCHED BOOKLETS
Ideal for newsletters and pamphlets, it folds pages in half and puts two staples in the saddle-stitch (center) position.



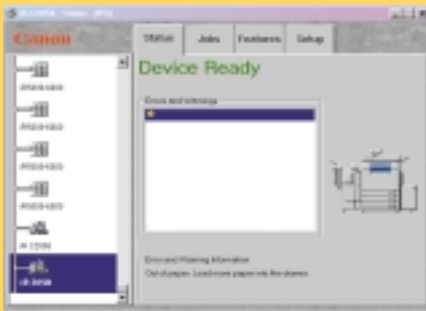
SPREADSHEETS
Keep your earnings in the black, and make your projections as bright as possible.

DOCUMENT COVERS
Create internal reports or client proposals, each with its own distinctive cover.





NetSpot Features Tab



NetSpot Status Tab

COLOR NETWORK PRINTER BOARD-A1 vs. COLOR NETWORK PRINTER BOARD-B1.

Now the Color Network Printer Board-B1 supports both **PCL 5c** and **PostScript 3** simultaneously. Dominant in graphic-intensive environments, PostScript has become the recognized standard for printing documents and images with the greatest control and image quality, but now users can benefit from having both!

The Color imageRUNNER C2058 supports PCL 5c to make printing business color simple in PCL-based workgroup environments. As a corporate user, you are probably utilizing applications that produce business color documents that are run on networks such as Windows-based PCs. As a result, a PCL-compatible printer board is a critical requirement for corporate workgroup environments. Users can enjoy all of the available settings at the click of a mouse.

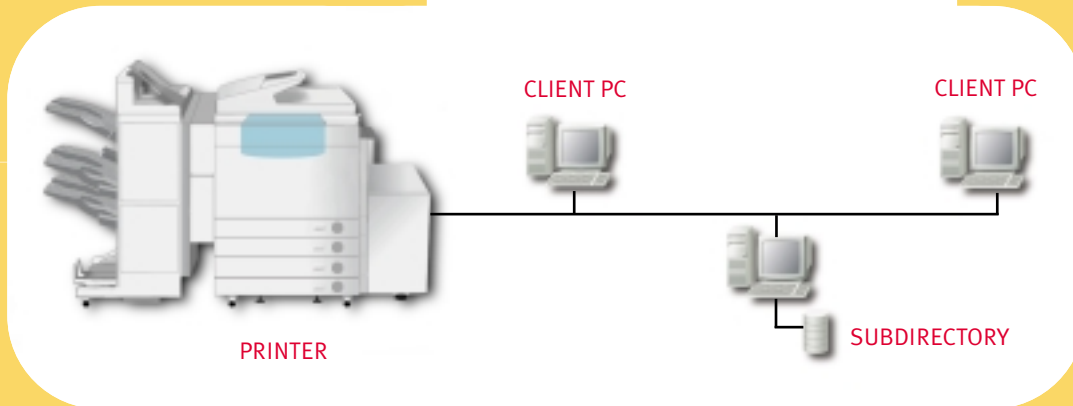
When comparing the Color Network Printer Board-B1 with its predecessor, operators can now enjoy more flexibility with their printing requirements because of the addition of PCL 5c. PCL 5c has been found to be faster than PostScript when printing on business application software, and this can mean the difference in office productivity.

It also makes it easier to achieve high productivity with the new Color Network Printer Board-B1 with average speeds up to two times faster, due to an enhanced CPU (700MHz). As a result, users can realize more robust data handling and processing power with the Color Network Printer Board-B1.

And it's so user friendly that it offers the same easy logic with a professional finish. Any connected user can send print jobs to the Color imageRUNNER C2058

for output, taking advantage of all the document and image manipulation capabilities offered by the Color imageRUNNER C2058 through a user-friendly print driver interface. This enhanced printer board also allows for simultaneous auto-switching connectivity into a multiplatform networking environment without user-intervention. This means that it can automatically detect the language of an incoming data file, and switch to the appropriate PDL and protocol set to accept and print the data.

COLOR imageRUNNER C2058 CONNECTIVITY



FREEFORM and FIERY® REMOTE SCAN.

Users also have the option to enhance their systems with additional new features such as FreeForm and Fiery Remote Scan.

FreeForm is the internal RIP technology that allows the Color Network Printer Board-B1 to combine static background images with variable data and merge the two for fast printing of variable data images. FreeForm allows users to “slug” images and text into predefined “windows” on a page without re-RIPping the same file repeatedly. This tool is great for users who need to merge databases with images and then also print large quantities of customized direct mail pieces quickly, easily, and cost-effectively!

Fiery Remote Scan is a new utility that allows the Color imageRUNNER C2058 to serve as a shared black-and-white 600-dpi network scanner. When equipped with the proper optional accessories, you can place hard-copy documents in the DADF or on the platen glass, and instruct the Color imageRUNNER C2058 to scan and store image data in its 10GB hard disk drive. Once stored in memory, you may also retrieve scanned files and move them to a networked PC, incorporate them into other documents, or store them in the Command WorkStation spool area of the hard disk drive for future printing.